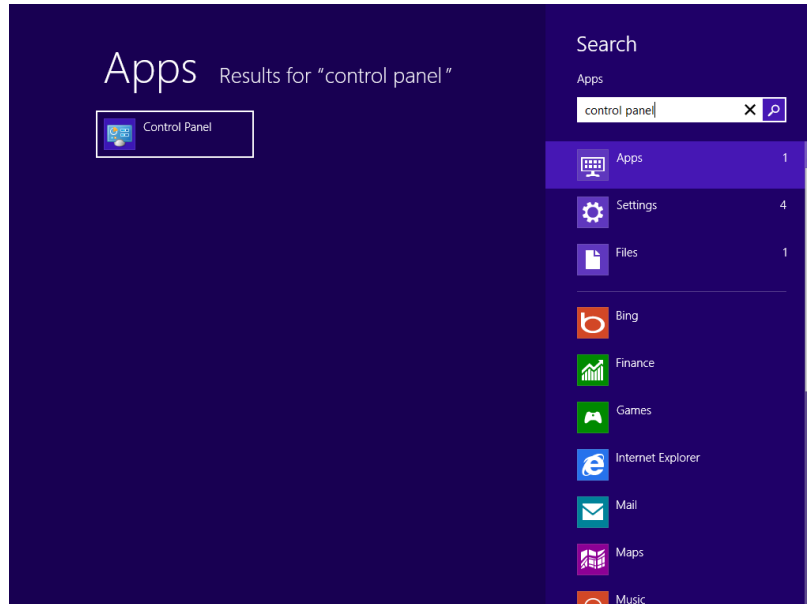


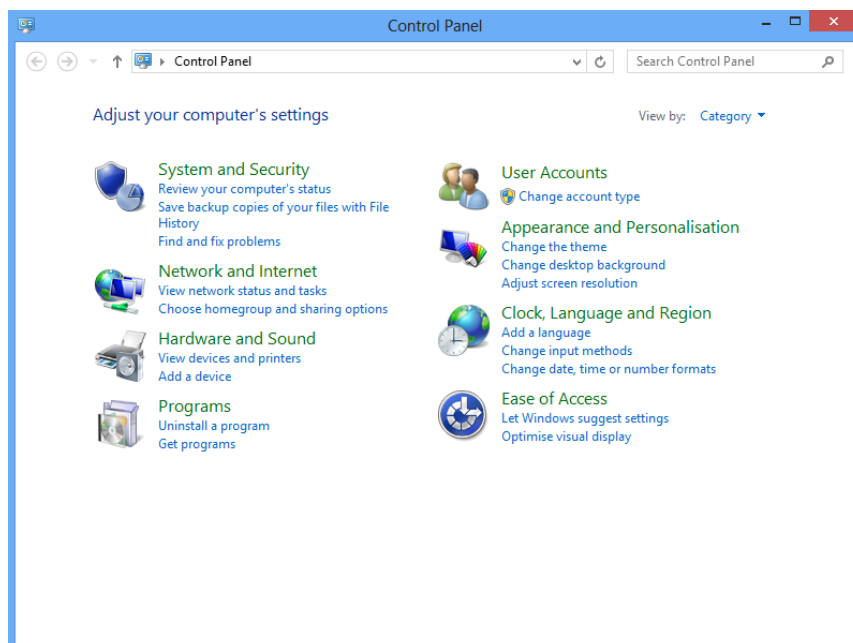
WINDOWS 8 DRIVER INSTALLATION GUIDE (DONGLE 1 AND DONGLE 3)

Windows 8 will not automatically ask for a driver when either dongle 1 or 3 is plugged into the computer. To install a Dongle driver connect the appropriate dongle and then select **Search**.

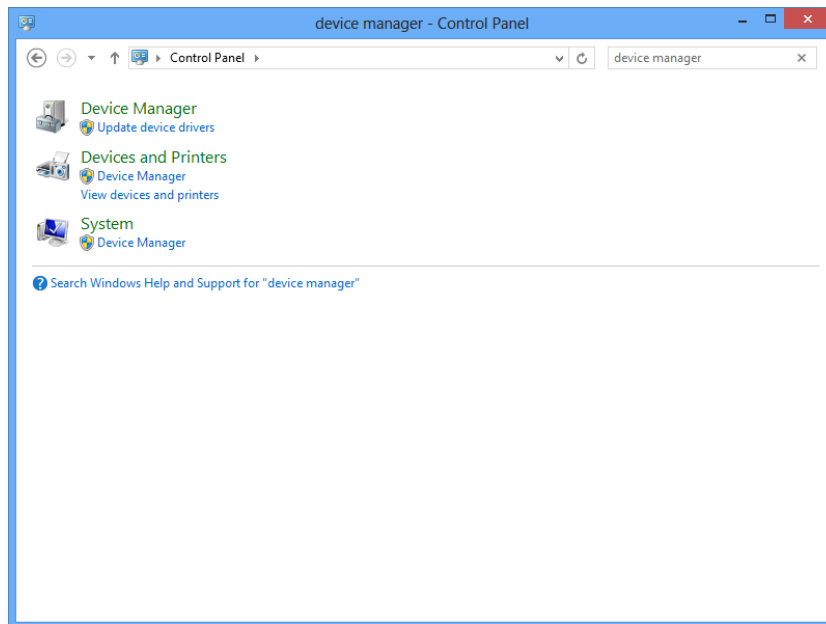
Type **Control Panel** into Search:



Open the Control Panel App found by search.

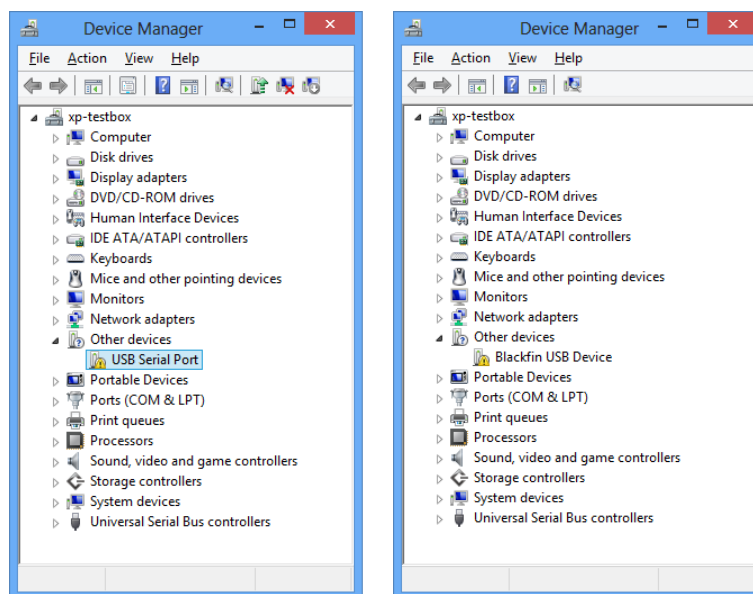


Then search for **Device Manager** program from within the control panel (top right):

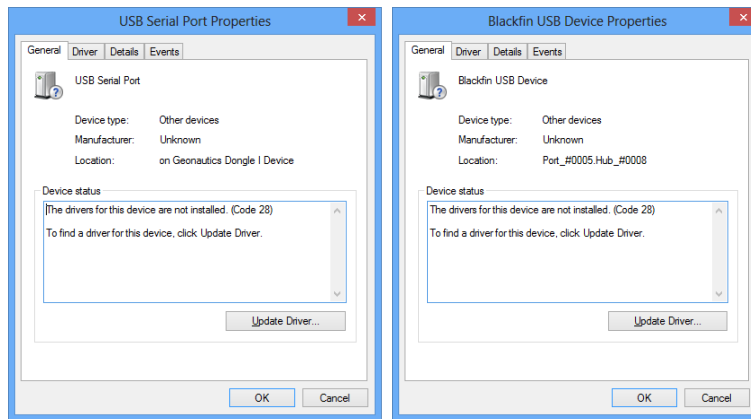


Select **Device Manager** under **System** in the search results.

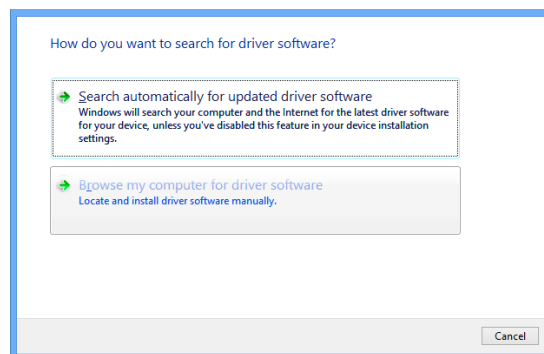
In Device Manager, a Dongle1 device will be shown under “Other Devices” as a USB Serial Port, while a Dongle3 device will be shown as a Blackfin USB Device.



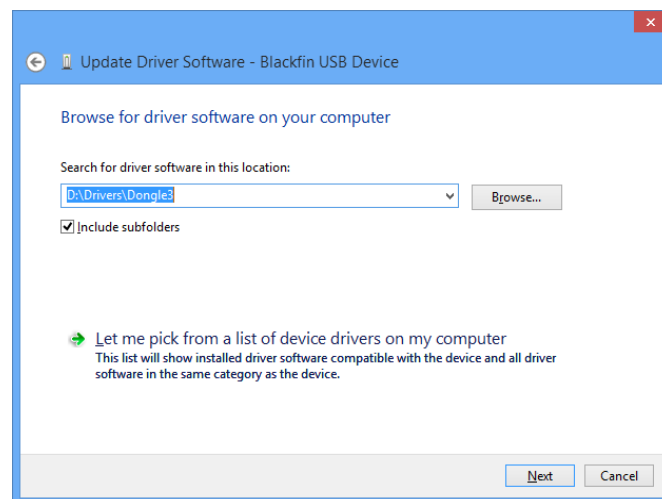
Double click the device you need to install a driver for.



Select **Update Driver**:



Select **Browse my computer for driver software**



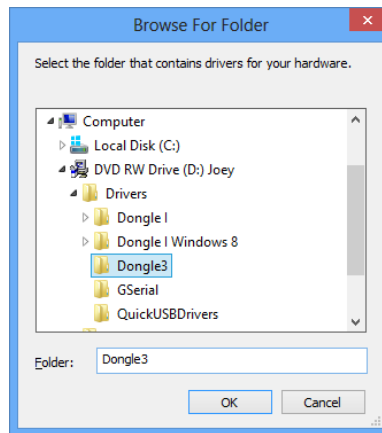
Click Browse to select the location of the Geonautics Drivers.

The default install location for Dongle 1 is:

C:\Program Files\Joey\Drivers\Dongle 1 Windows 8

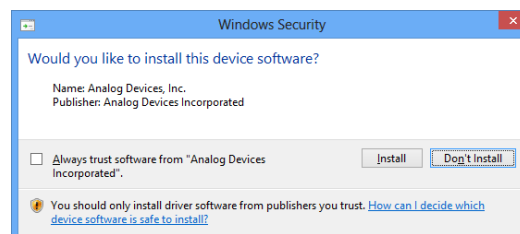
The default install location for Dongle 3 is:

C:\Program Files\Joey\drivers\Dongle3

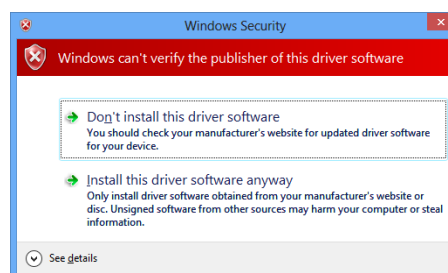


Make sure to select **Include subfolders**

Select **Next**.



Windows will ask for permission to run the driver software.



Select **Install this driver software anyway**

Windows will then install the driver and display a completion message.

